



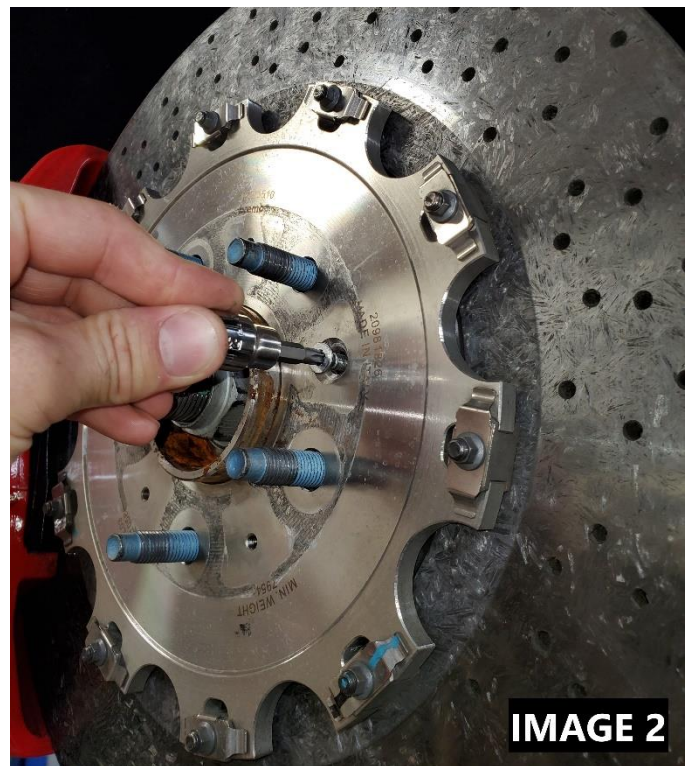
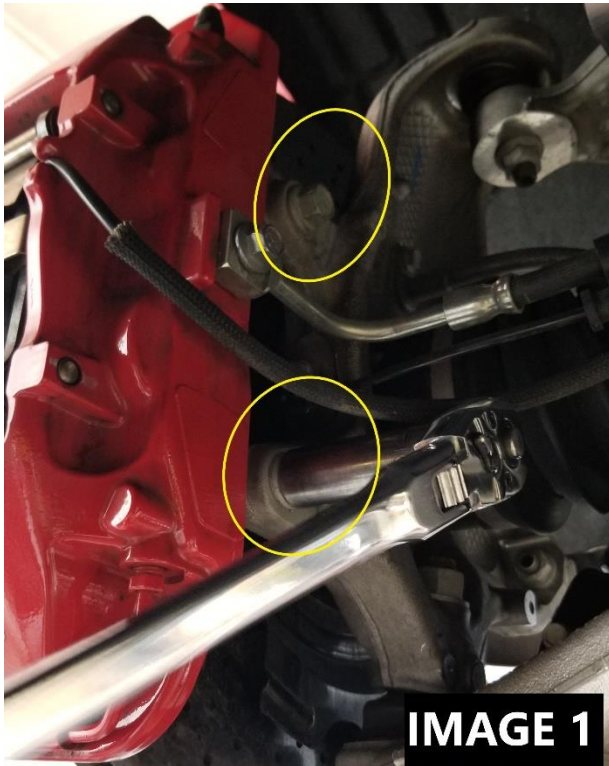
C7 Corvette - 15" Conversion Spindle

TOOLS REQUIRED:

- Hydraulic jack and jack stands
- Metric and standard socket and wrench set
- Mallet
- Impact
- Hub nut socket
- T15 Torx bits
- Allen bits
- Needlenose pliers

INSTALLATION:

1. Lift the rear of the vehicle and safely support on jack stands. Remove both rear wheels.
2. Using a 15mm socket, remove brake calipers and support them by the frame **IMAGE 1**
3. A T15 torx bit is needed to remove the screw that retains the rotor to the hub **IMAGE 2**



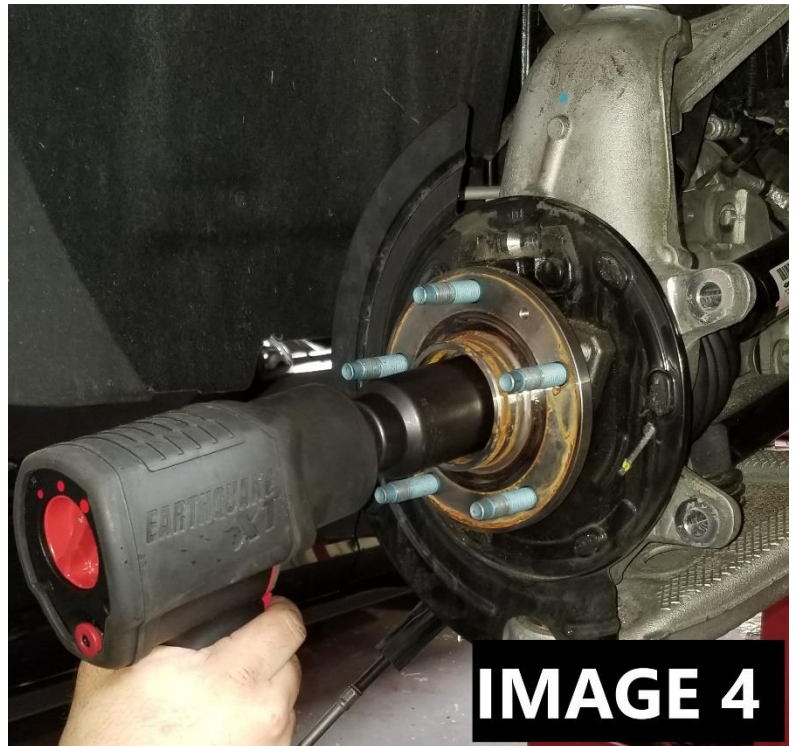
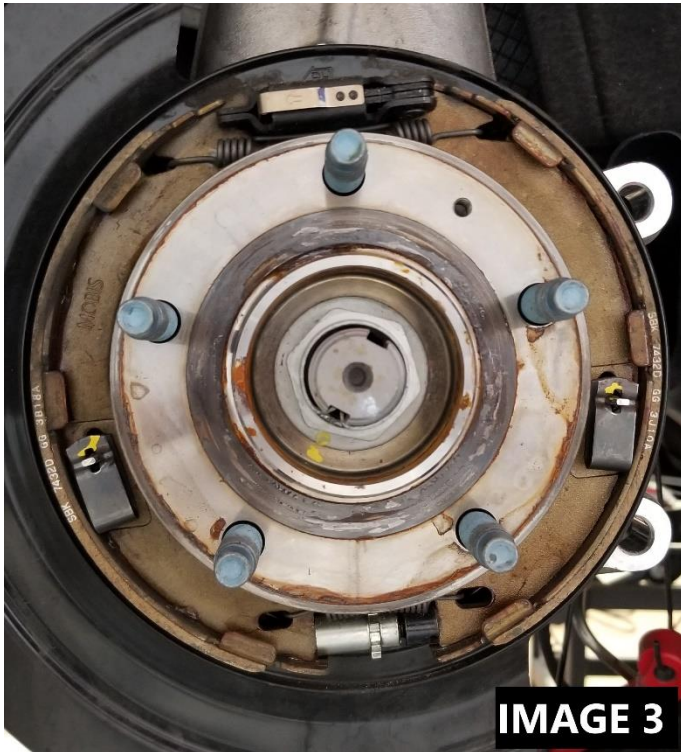
WWW.BMRSUSPENSION.COM

This product is an aftermarket accessory and not designed by the vehicles manufacturer for use on this vehicle. As such, Buyer assumes all risk of any damage caused to the vehicle or person during installation or use of this product.



C7 Corvette - 15" Conversion Spindle

4. Disconnect the wheel speed sensor and the parking brake cable.
5. Use a needlenose pliers to disassemble the parking brake shoe assembly **IMAGE 3**
6. Disconnect the toe rod from the spindle
7. Use an impact to remove the hub nut and use a mallet to drive out the axle **IMAGE 4**
8. Remove the nuts holding the upper and lower balljoints and knock the spindle free from the balljoints
9. Transfer the parking brake drum backing plate from the factory spindle to the new spindle.

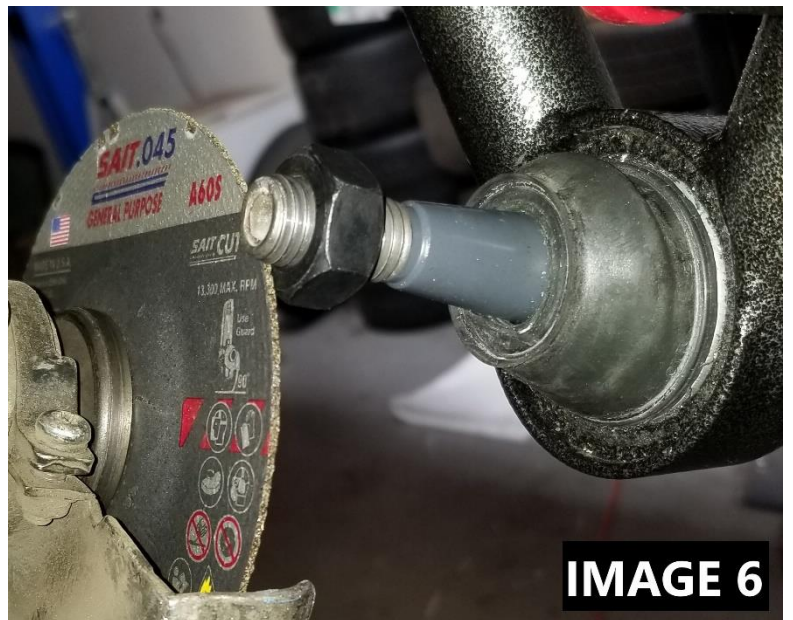
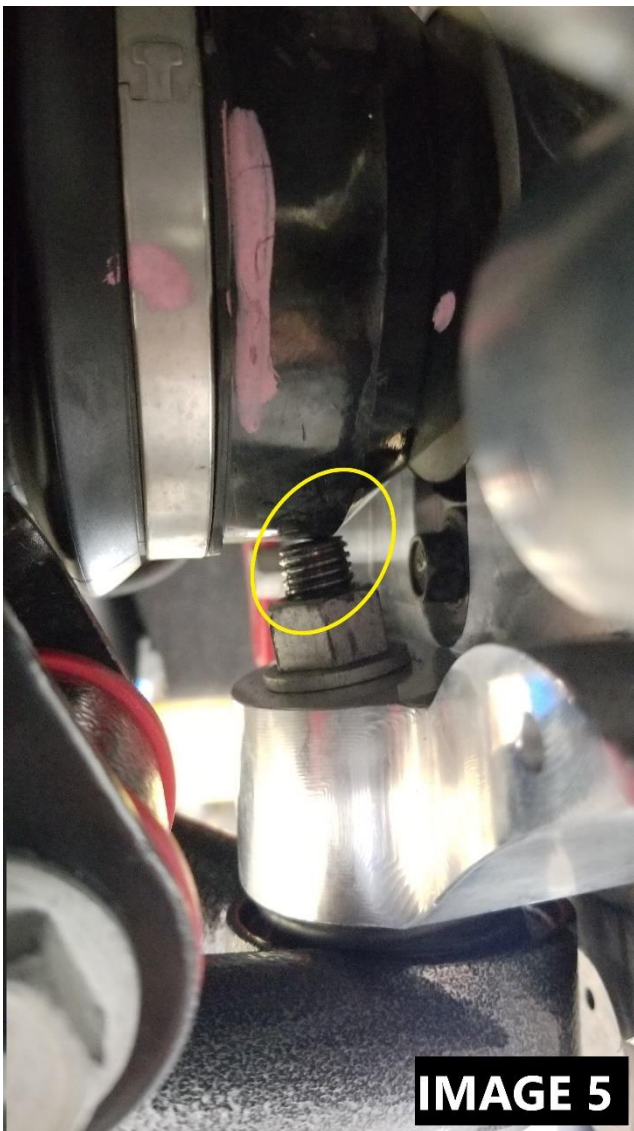


WWW.BMRSUSPENSION.COM

This product is an aftermarket accessory and not designed by the vehicles manufacturer for use on this vehicle. As such, Buyer assumes all risk of any damage caused to the vehicle or person during installation or use of this product.

C7 Corvette - 15" Conversion Spindle

10. The lower balljoint stud will need to be trimmed to clear the axle stub **IMAGE 5**
- a. Place the spindle on the lower balljoint and put the nut on tight to see how much excess stud can be trimmed
 - b. Remove the spindle
 - c. Thread the nut back on the stud
 - d. Use a cutoff wheel to trim to your mark **IMAGE 6**
 - e. Remove the nut and continue assembly



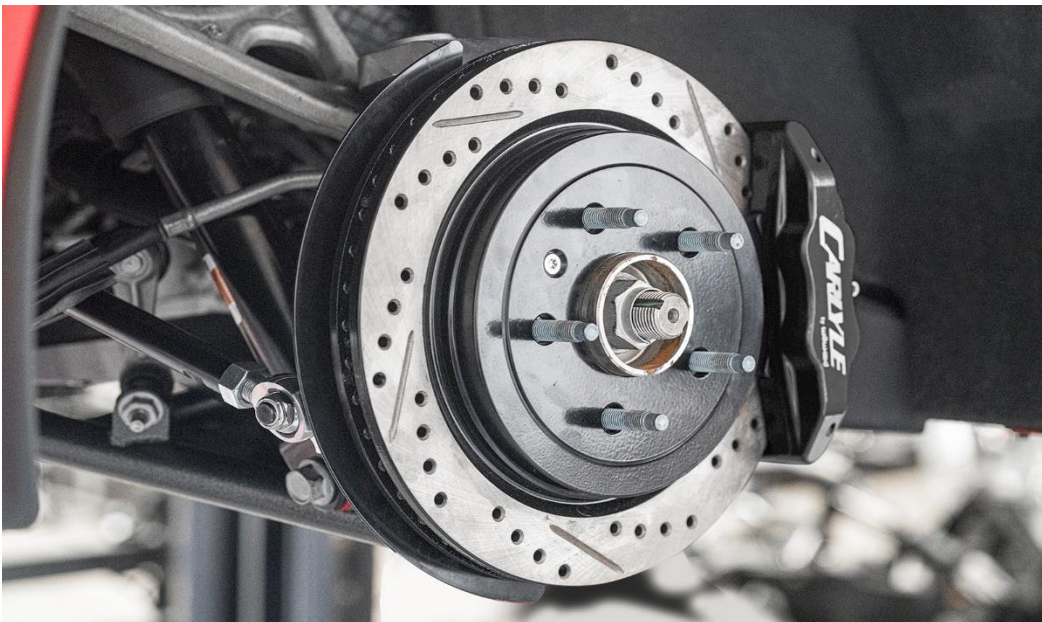
WWW.BMRSUSPENSION.COM

This product is an aftermarket accessory and not designed by the vehicles manufacturer for use on this vehicle. As such, Buyer assumes all risk of any damage caused to the vehicle or person during installation or use of this product.



C7 Corvette - 15" Conversion Spindle

11. Feed the stub axle through the hub and attach the spindle to the balljoints, torque them to factory spec.
12. Reassemble the parking brake drum assembly in reverse order from how it was removed.
13. Reconnect the wheel speed sensor and parking brake cable.
14. Attach the toe rod to the new spindle (You will need to have the car aligned after assembly)
15. Attach the hub nut and torque to factory spec.
16. Place the rotor on the hub over the wheelstuds
17. Attach the caliper to the spindle using the factory hardware
18. Put the wheels on and lower the vehicle (an alignment is recommended after this installation)



WWW.BMRSUSPENSION.COM

This product is an aftermarket accessory and not designed by the vehicles manufacturer for use on this vehicle. As such, Buyer assumes all risk of any damage caused to the vehicle or person during installation or use of this product.