



## 6<sup>th</sup>GenF-Body Harness Bar Installation Instructions

### FRONT TOOLS REQUIRED:

- Trim Removal Tool
- T20 and T50 Torx bits
- Metric Wrenches and Sockets
- Phillips Head Screwdriver

### INSTALLATION:

1. Move the seats as far forward as possible to gain access underneath. Next disconnect the battery before disconnecting the connection on the yellow seat module under the seats. **(IMAGE 1)**
2. Use a T20 Torx bit to remove the rear seat bolts. **(IMAGE 2)** The seat should now be able to tilt forward and lift out of the front mounts.

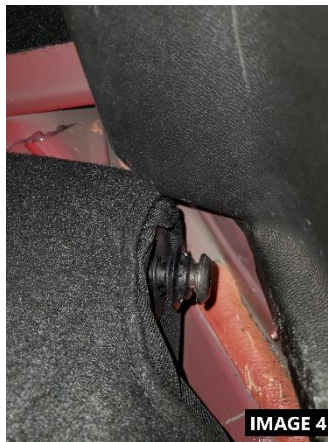


[WWW.BMRSUSPENSION.COM](http://WWW.BMRSUSPENSION.COM)

*This product is an aftermarket accessory and not designed by the vehicles manufacturer for use on this vehicle. As such, Buyer assumes all risk of any damage caused to the vehicle or person during installation or use of this product.*

### 6<sup>th</sup>GenF-Body Harness Bar Installation Instructions

3. Remove the rear bench seat. Under each side there is a plastic catch, push and lift in order to release the front of the seat. Once each catch is removed on each side, the rear of the seat bottom has a spring clip that must be depressed with a flathead to lift it from the slot in the side of the vehicle. **(IMAGE 3, 4, and 5)**



4. Use a T50 Torx bit to remove and discard the rear seatbelts. The front seatbelts will also need to be removed, in order to do so, remove the cover panels from the sides of the seats and the interior door panels.
5. Use an interior panel removal tool to remove the cover from the B-Pillar panel and remove the 7mm bolt holding it to the car as shown in **IMAGE 6**
6. The C-Pillar panel is retained by a 7mm bolt. Remove this and the Door Sill panel to free up the side panel.

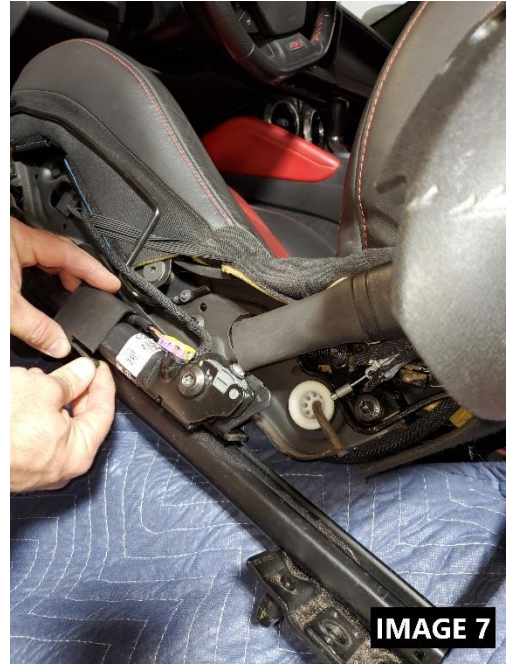


[WWW.BMRSUSPENSION.COM](http://WWW.BMRSUSPENSION.COM)

*This product is an aftermarket accessory and not designed by the vehicles manufacturer for use on this vehicle. As such, Buyer assumes all risk of any damage caused to the vehicle or person during installation or use of this product.*

## 6<sup>th</sup>GenF-Body Harness Bar Installation Instructions

7. Once the side panel is out of the way, use a T50 Torx bit to remove the seatbelt. Once the seatbelt is removed the interior panels can be reinstalled.
8. To install lap belts for your harness onto the stock seats, you will need to reuse the factory T50 mounting bolt in the side of the seat **(IMAGE 7)** otherwise an aftermarket seat bracket should have provisions for a lap belt.
9. To install the harness bar, assemble the bar and the legs loose in the vehicle, get all of the bolts started before final tightening.



[WWW.BMRSUSPENSION.COM](http://WWW.BMRSUSPENSION.COM)

*This product is an aftermarket accessory and not designed by the vehicles manufacturer for use on this vehicle. As such, Buyer assumes all risk of any damage caused to the vehicle or person during installation or use of this product.*



### **6<sup>th</sup>GenF-Body Harness Bar Installation Instructions**

10. Use the rod ends at the end of the adjustable legs to properly set the height of the harness bar. You will want the shoulder straps to angle slightly downward from your shoulders to the harness bar.

**This product is an aftermarket accessory and not designed by the vehicles manufacturer for use on this vehicle. As such, Buyer assumes all risk of any damage caused to the vehicle or person during installation or use of this product.**



**WWW.BMRSUSPENSION.COM**

*This product is an aftermarket accessory and not designed by the vehicles manufacturer for use on this vehicle. As such, Buyer assumes all risk of any damage caused to the vehicle or person during installation or use of this product.*